

Carrier 30 HXC 375

Specifications

Brand	Carrier
Type	30 HXC 375
Product type	Water Cooled Chiller
Capacity kW	1302,0
Capacity Tons	370,2
Refrigerant	Freon
Refrigerant Type	R134a
Weight in kg.	5258
Sizes	4560x1020x2100 mm (LxWxH)
Compressor(s) type & model	4x Carlyle 06NW2300S5EC
Display	Carrier pro-dialog plus
Remarks	Y.o.b. 2007
Stock	1

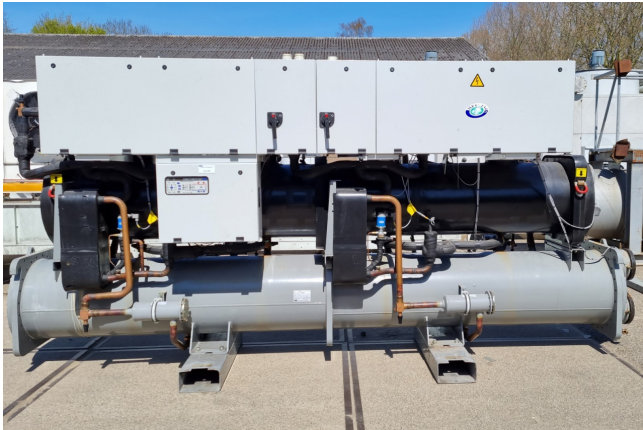


Description

Used Carrier 30 HXC 375

Used Carrier 30HXC375--A0537-PEE--watercooled chiller. Complete with 4 Carlyle 06NW2300S5EC screw compressors. Including Shell & tube evaporator/exchanger and a Carrier 09HX2137 condensor containing a volume of 251 liter. 2 plate heat exchangers and multiple liquid line filter driers.

*All components of this used chiller will be tested on good working, leak free condition (condensing blocks, compressors, fans, control panel, etcetera). Choosing HOSBV means buying with warranty. We perform a industrial cleaning. Also, we can arrange your shipment.



1 - (FR) NUMERO DE SERIE (EN) SERIAL NUMBER (DE) SERIENNUMMER	12Q703985
2 - MODELE - MODEL MODELLNUMMER	30HXC375-A0537-PEE - -
3 - VARIANTE VARIANT VARIANTE	30HXC
4 - ANNEE DE FABRICATION ET DATE D'ESSAI YEAR OF MANUFACTURING AND TEST DATE HERSTELLUNGSJAHR UND DATUM	14/03/2007
5 - FLUIDE - - REFRIG KALTMITTEL	R 134 a
6 - GROUPE GRUPPE	2
7 - CHARGES CIRCUIT A/B REFRIG. CHARGE A/B KREISLAUF A/B	119.0 Kg / 137.0 Kg
8 - FLUIDE D'INERTAGE INERTING REFRIG. NEUTRALISIERUNG-REFRIG.	23 --AZOTE--NITROGEN--STICKSTOFF
10 - PRESSION ADMISSIBLE MIN/MAX ALLOWABLE PRESSURE MIN/MAX ZULASSIGE MIN/MAX - DRUCK	21 - HAUTE PRESSION HIGH PRESSURE HOCHDRUCKSEITE (PS) -0.9 / 25.0 bar
11 - TEMPERATURE ADMISSIBLE MIN/MAX ALLOWABLE TEMPERATURE MIN/MAX ZULASSIGE MIN/MAX - TEMPERATUREN	22 - BASSE PRESSION LOW PRESSURE NIEDERDRUCKSEITE (TS) -20.0 / 80.0 °C
12 - PRESSION DE DECLENCHEMENT DES PRESSOSTATS PRESSURE SWITCH SETTING DRUCKSCHALTER-SOLLDRUCK	16.0 bar
13 - PRESSION DE DECLENCHEMENT DES SOUPAPES SAFETY RELIEF VALVE SETTING SICHERHEITSENTL.-SOLLDRUCK	25.0 bar
14 - PRESSION D'ESSAI D'ETANCHEITE DE L'UNITE UNIT LEAK TEST PRESSURE LECKTEST-DRUCK DES GERATS	15.0 bar
15 - TENSION VOLTAGE SPANNUNG	400 V
17 - FREQUENCE FREQUENCY FREQUENZ	~ 50 Hz
19 - PUISSANCE ABSORBEE MAX MAX POWER INPUT LEISTUNGSAUFNAHME	212.0 / 212.0 kW
20 - POIDS NET NET WEIGHT NETTOGEWICHT	5258 Kg
24 - PRESSION DE DECLENCHEMENT DES DISQUES DE RUPTURE RUPTURE DISKS SETTING EINSTELLDRUCK DER HERTSCHEIBEN	* bar



MANUFACTURED IN FRANCE BY
CARRIER SCS - 01120 MONTLUEL - FRANCE
A SUBSIDIARY OF CARRIER CORPORATION
SYRACUSE NEW YORK UNITED STATES OF AMERICA

